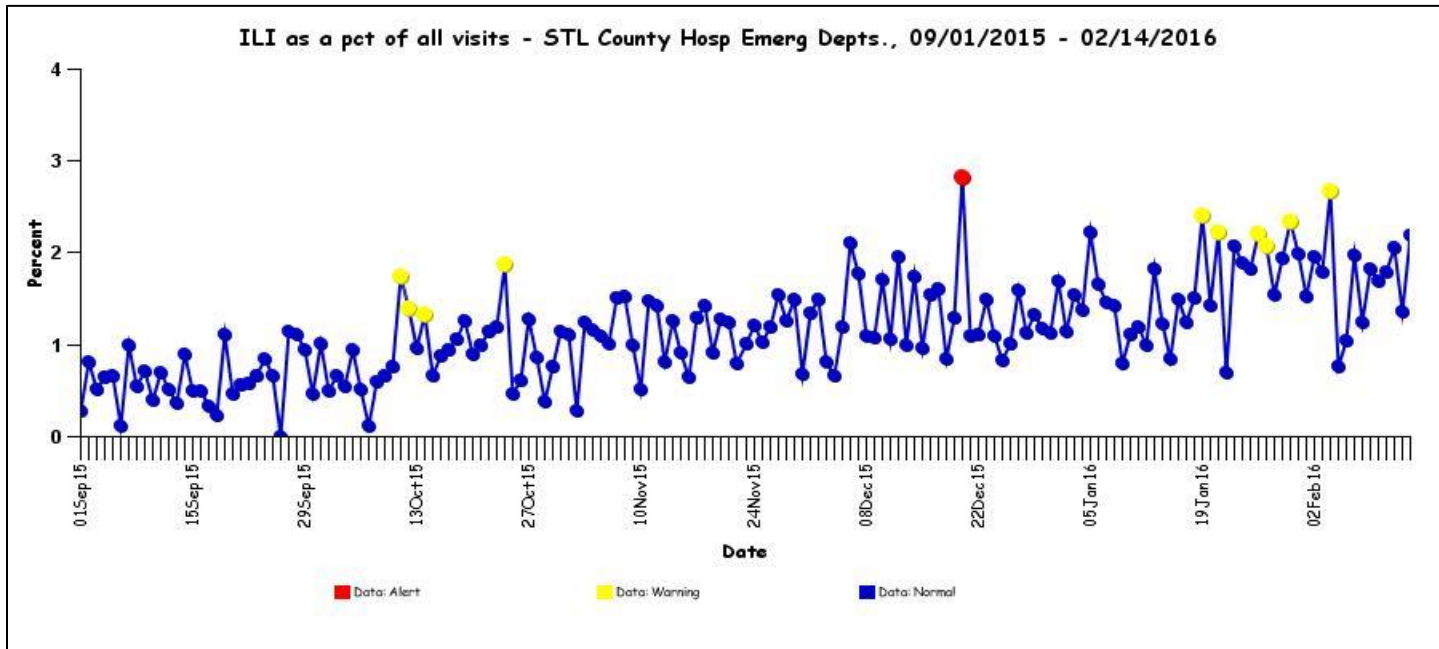


Influenza Surveillance Report

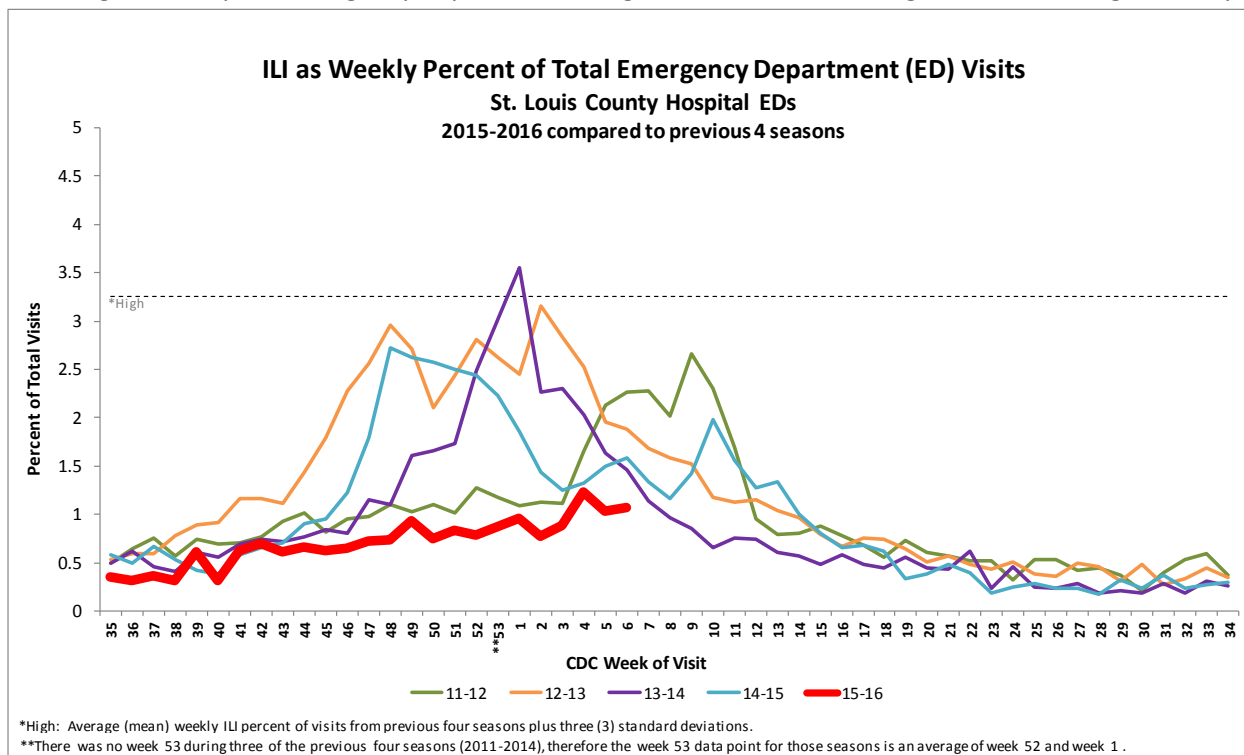
St. Louis County Department of Public Health, 2/17/2016



ESSENCE ILI Surveillance



As determined by ESSENCE, influenza-like illness (ILI) as a percent of all visits in St. Louis County hospital emergency departments ranged from 1.25% to 2.19% during the week ending 2/14/2016. ILI counts among St. Louis County residents visiting local hospital emergency departments ranged from 14 to 21 during the week ending February 14th.



ILI as a weekly percentage of all visits in St. Louis County hospital emergency departments was 1.07% compared to 1.59% in 2015 and 1.46% in 2014, for week 6.

Please remember the following points when interpreting ESSENCE data:

- ILI counts are among St. Louis County residents visiting hospitals participating in ESSENCE only. Percent of visits attributed to ILI is from all hospital emergency departments in St. Louis County only. ESSENCE does not include data from private physicians, clinics, or ambulatory care centers.
- ESSENCE is based on chief complaints, not final diagnoses or laboratory confirmed tests.
- ILI includes chief complaints with the character strings like "FLU", "INFLUENZA", and "FLULIKE" and those that ESSENCE parses to (Fever and (Cough or Sore Throat)).

Influenza Surveillance Report

St. Louis County Department of Public Health, 2/17/2016



Active Influenza Surveillance, Laboratory Confirmed Tests

Surveillance sites reported 98 cases of Influenza A and 5 cases of Influenza B for the week ending 2/14/2016.

Influenza by Report Week, Type

St. Louis County Residents Only

For Cases Reported between 09/28/2015 and 2/14/2016

Week ending	Type A	Type B	Unk Type	Total
10/4/2015	1	0	0	1
10/11/2015	1	0	0	1
10/18/2015	4	2	0	6
10/25/2015	1	0	0	1
11/1/2015	1	1	0	2
11/8/2015	0	0	0	0
11/15/2015	1	0	0	1
11/22/2015	4	2	0	6
11/29/2015	6	2	0	8
12/6/2015	4	0	0	4
12/13/2015	10	1	0	11
12/20/2015	16	0	0	16
12/27/2015	17	2	0	19
1/3/2016	7	2	0	9
1/10/2016	15	1	0	16
1/17/2016	22	2	0	24
1/24/2016	58	3	0	61
1/31/2016	74	5	0	79
2/7/2016	81	12	0	93
2/14/2016	98	5	1	104
Total	421	40	1	462

The St. Louis County Department of Public Health has a wide range of provider sites enrolled in its active influenza surveillance program. Weekly, these sites report positive influenza findings to the Department of Public Health. Weekly totals may change as newly reported cases are attributed to the week of specimen collection.

Influenza by Age and Type

St. Louis County Residents Only

For Cases Reported between 09/28/2015 and 2/14/2016

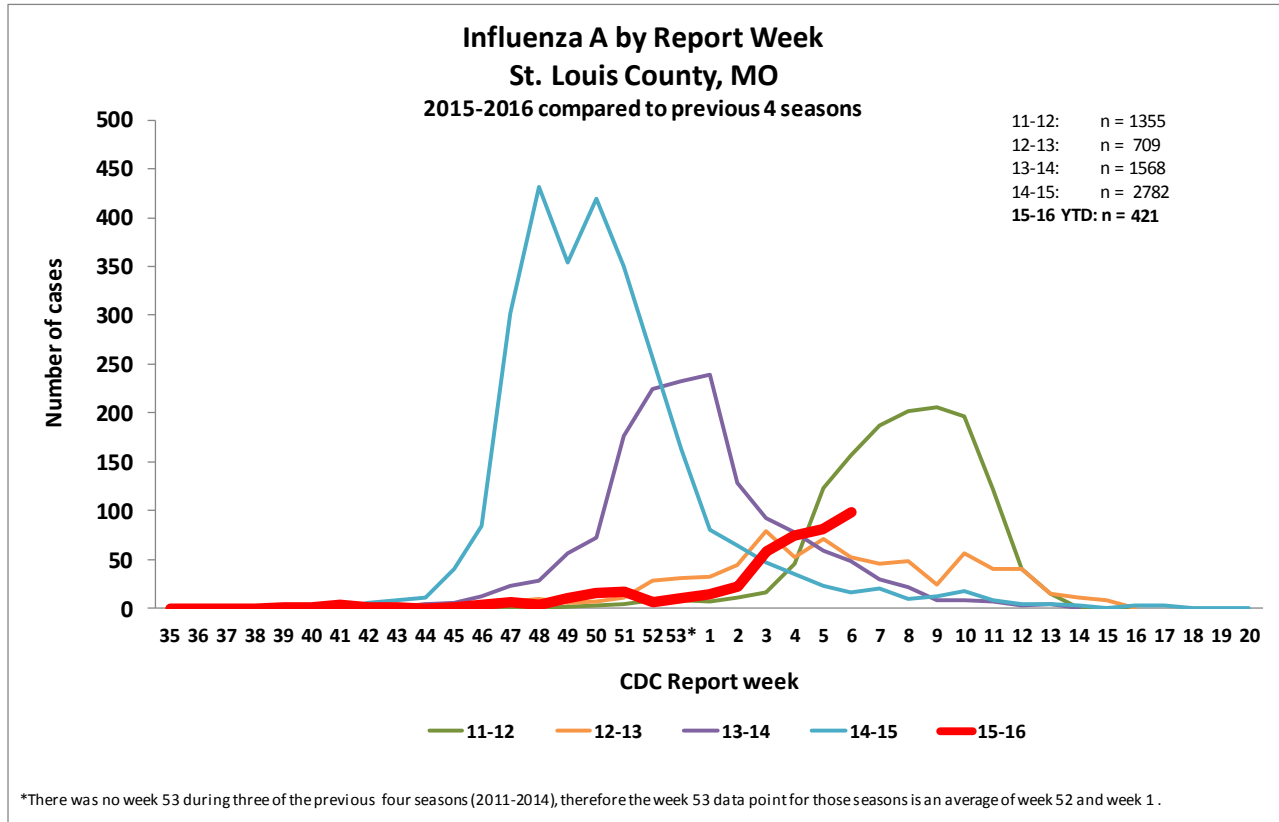
Age Group	Type A	Type B	Unk Type	Total
	n (% of total)	n (% of total)	n (% of total)	n (%)
00 to <02	43 (9)	5 (1)	1 (0)	49 (11)
02 to 04	40 (9)	6 (1)	0 (0)	46 (10)
05 to 14	61 (13)	2 (0)	0 (0)	63 (14)
15 to 24	64 (14)	6 (1)	0 (0)	70 (15)
25 to 49	118 (26)	7 (2)	0 (0)	125 (27)
50 to 64	61 (13)	5 (1)	0 (0)	66 (14)
65+	34 (7)	9 (2)	0 (0)	43 (9)
Total	421 (91)	40 (9)	1 (0)	462 (100)

Influenza Surveillance Report

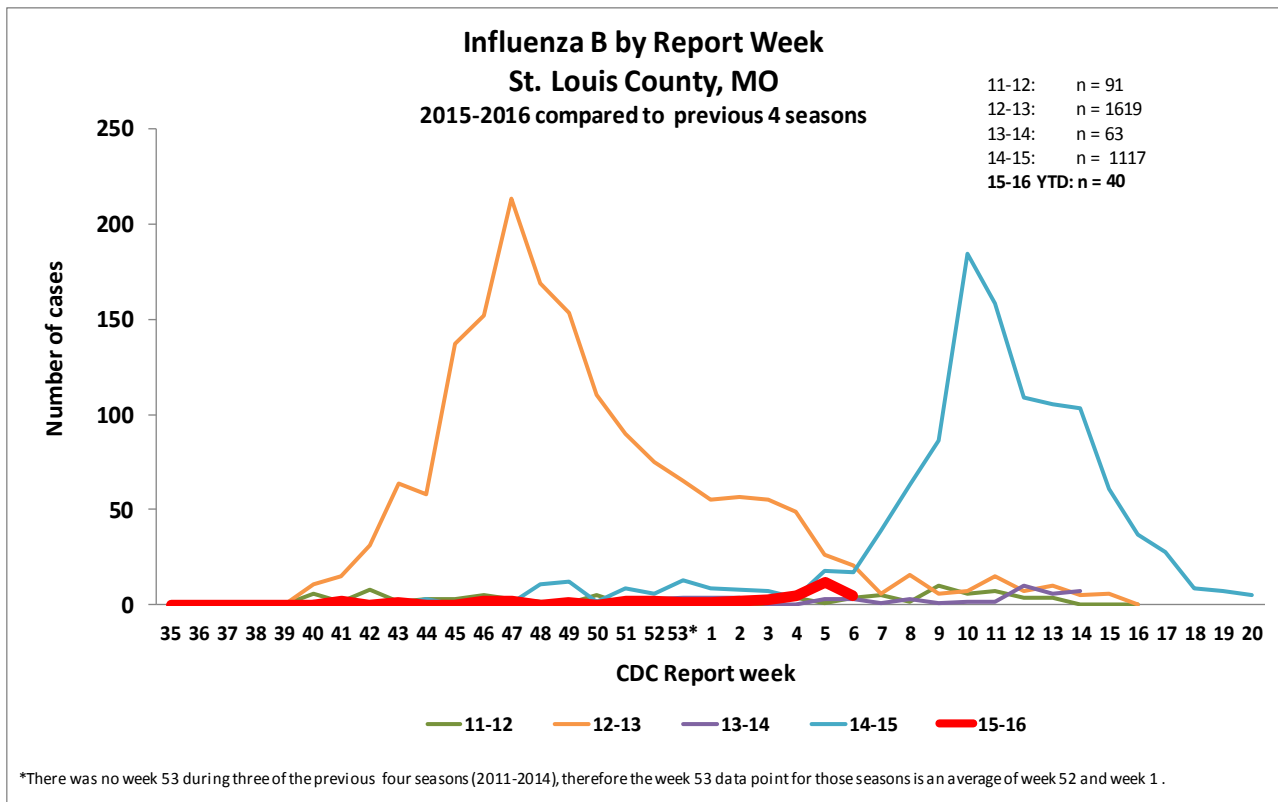
St. Louis County Department of Public Health, 2/17/2016



Total Influenza A by CDC Report Week, 2015-2016 compared to previous four seasons



Total Influenza B Cases by CDC Report Week, 2015-2016 compared to previous four seasons

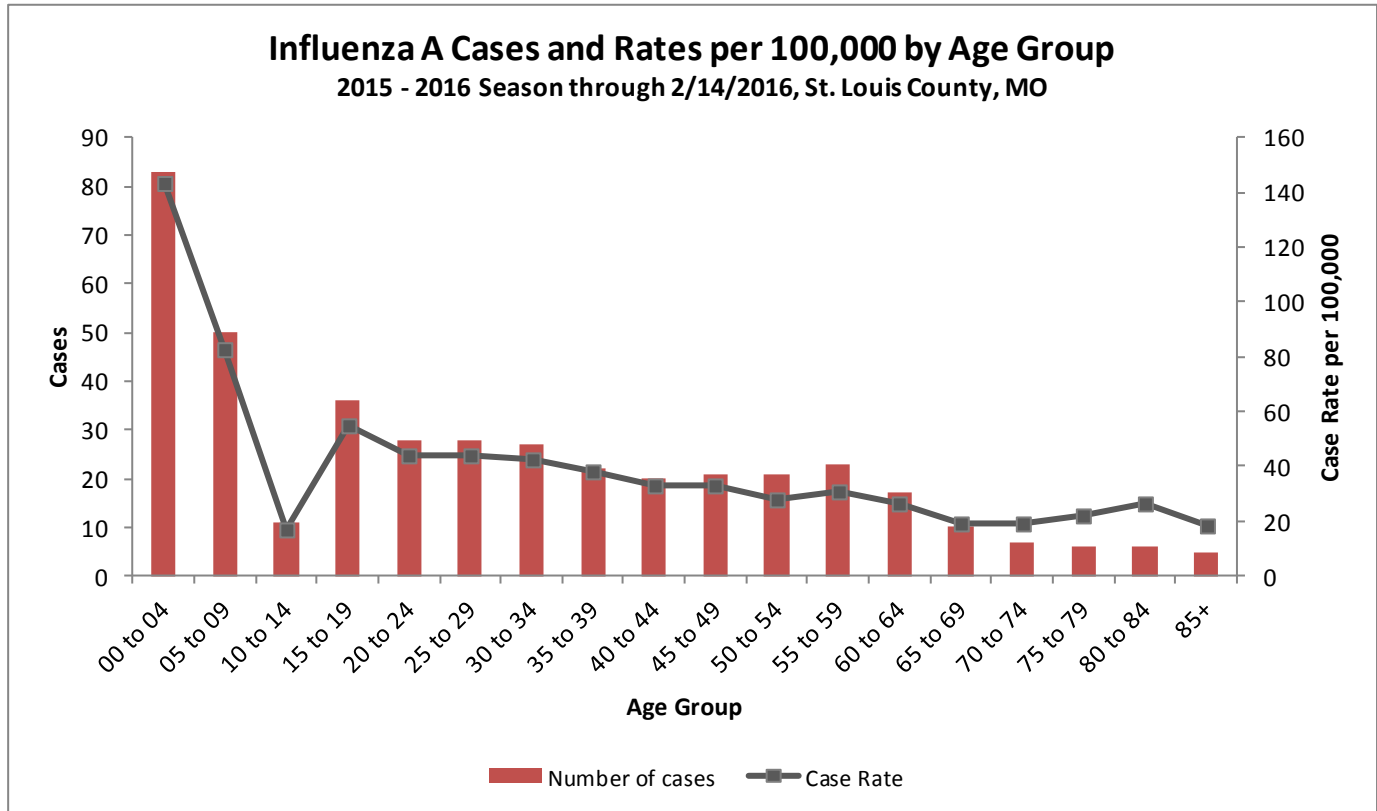


Influenza Surveillance Report

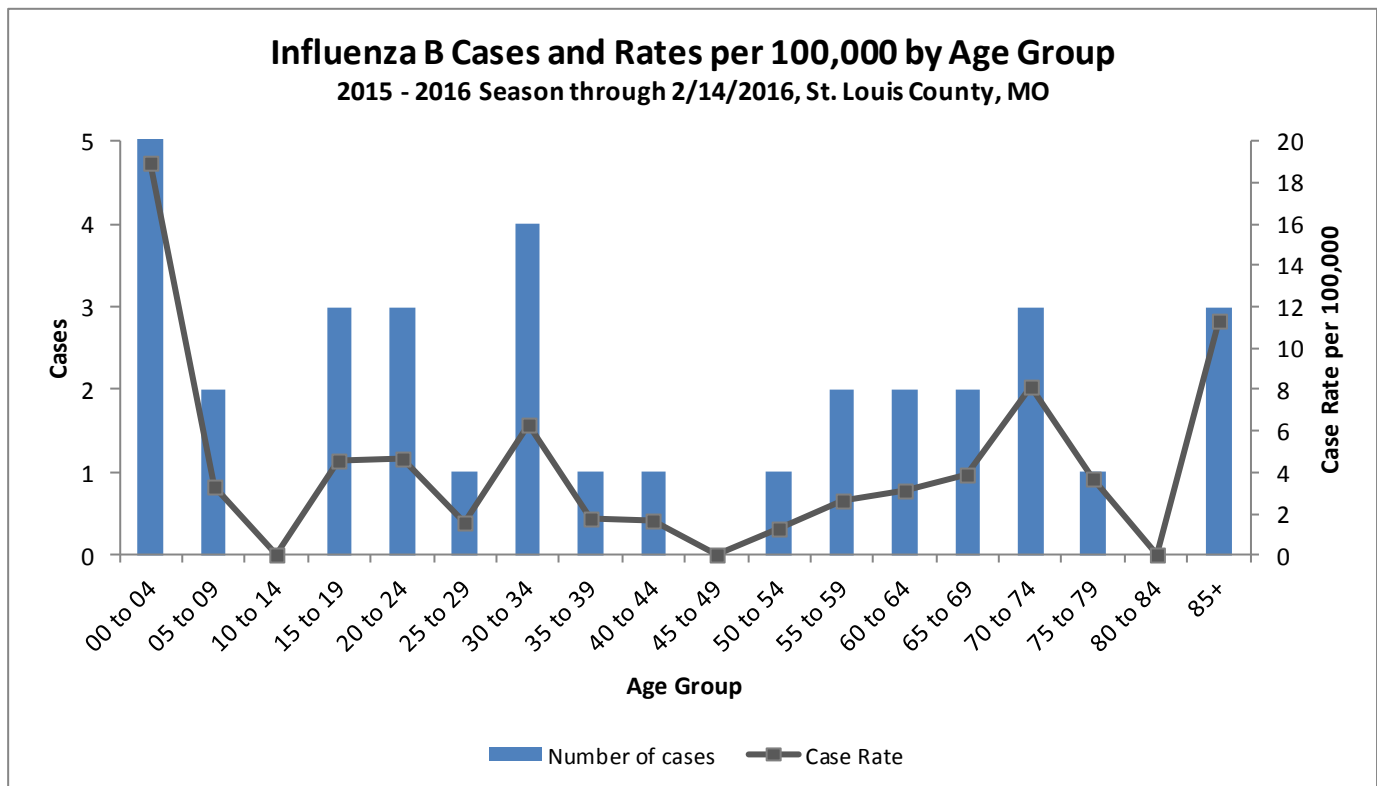
St. Louis County Department of Public Health, 2/17/2016



Influenza A Cases and Rates by Age Group



Influenza B Cases and Rates by Age Group

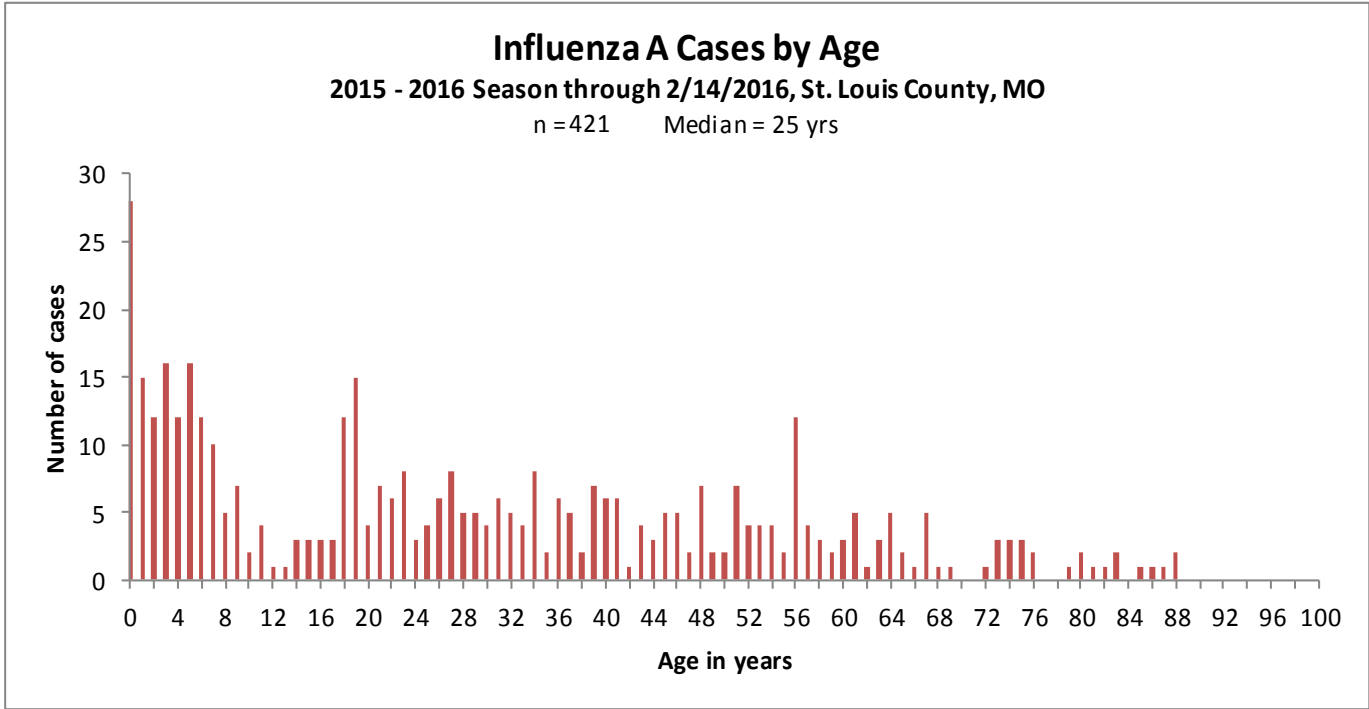


Influenza Surveillance Report

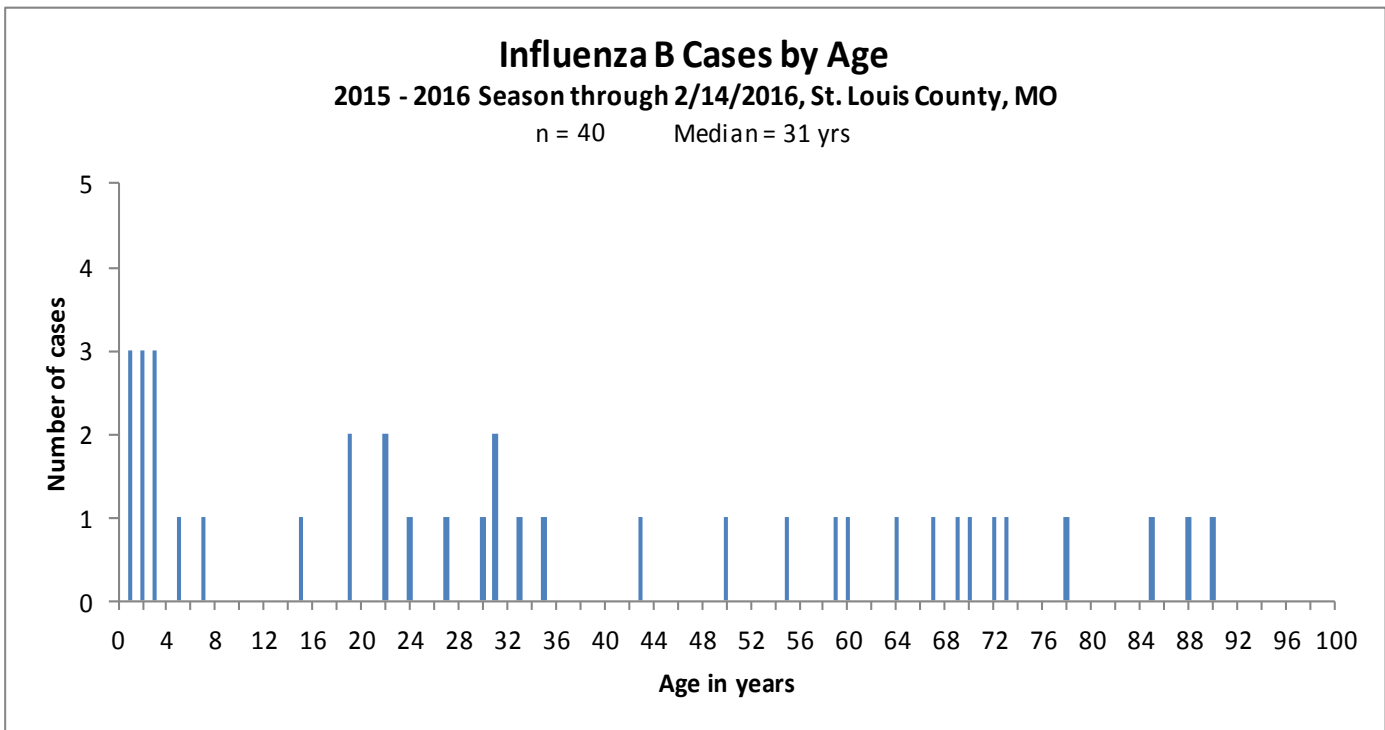
St. Louis County Department of Public Health, 2/17/2016



Influenza A Cases by Age



Influenza B Cases by Age



Influenza Surveillance Report

St. Louis County Department of Public Health, 2/17/2016



Over the Counter Medications and Supplies

The St. Louis County DPH monitors the sales of over-the-counter (OTC) healthcare products through the National Retail Data Monitoring System (NRDMS) data that is imported into ESSENCE. Participating pharmacies in St. Louis County transmit OTC data daily to the NRDMS. Please note that the NRDMS data includes promotional and non-promotional sales.

Sales data of OTCs related to cough/colds at participating County pharmacies averaged **2194 units per day** for the week ending 2/14/2016, an increase from the previous week's average of **1951 units per day**. Since September 1, 2015, sales averaged **1789 units per day**.

Thermometer sales at participating County pharmacies averaged **39 units per day** for the week ending 2/14/2016, an increase from the previous week's average of **31 units per day**. Since September 1, 2015, sales averaged **21 units per day**.

Currently, the NRDMS time series graphs are unavailable.

Weekly Virus/Microbiology Update, St. Louis Children's Hospital*:

<http://slchlabtestguide.bjc.org/Default.aspx?url=f8ca0c06-abe7-44cf-8059-934e4d0f6354>

**courtesy of Gregory Storch, MD, and the St. Louis Children's Hospital Clinical Laboratory*